



ORAL HEALTH KANSAS

ADVOCACY • PUBLIC AWARENESS • EDUCATION

Volume 8, Issue 37

September 13, 2017

In This Issue

[Faces of OHK](#)

[Exhibitor early bird rate ends soon!](#)

[We want to hear from you!](#)

[Sugary Drink Display](#)

[Oral health worries for older adults and persons with disabilities](#)

[CHIP Reauthorization Deadline Quickly Approaching](#)



Last week, Oral Health Kansas helped convene a community development training for community oral health coalition leaders. A dozen leaders participated in the training led by the University of Kansas Community Toolbox staff. The group had great conversations about increasing community engagement to address oral health in communities

Oral health worries for older adults and persons with disabilities

Did you know people with disabilities forgo dental treatment due to cost nearly **three times** more than people without disabilities? Did you also know, nearly **one third** of older adults have untreated tooth decay?

At the annual [Oral Health Kansas Conference](#) this year, we will have two sessions covering issues for seniors and people with disabilities.

- Assessing the Oral Health Status of Low-Income Seniors

This session will feature a report on the recent study of low-income seniors in Wichita.

- Panel Discussion: Meeting People with Disabilities Where They Are

Disability and dental professionals will share insight about the unique needs of people with disabilities and how to

throughout Kansas.



Exhibitor early bird rate ends soon!

Early bird ends September 27! OHK still has open slots for exhibitors for our annual conference in November. This year the conference will be held November 2-3 at the KState Olathe Campus in Olathe. Your exhibitor registration will provide the following benefits:

- An 8 foot table with tablecloth and skirting
- Two chairs
- Electricity, upon request
- Complimentary internet access
- Complimentary access to all conference meal functions and speakers

If you have any questions, email us at info@oralhealthkansas.org

To fill out an exhibitor form, click [here](#).

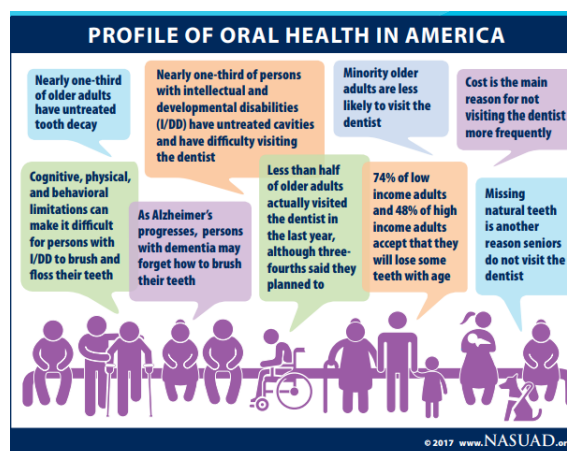
MEETING the
CHALLENGE
of **CHANGE**

We want to hear from you!

Have you browsed our website lately: www.oralhealthkansas.org?

meet them.

The [National Association of States United for Aging and Disabilities \(NASUAD\)](#) just released an [infographic](#) that depicts an overview of the oral health experiences of older adults and persons with disabilities. This resource highlights who is impacted, what happens as a result, why this happens, and where we can go from here.



[Register](#) for the [#OHK2017 conference](#) to learn about how to improve oral health for seniors and people disabilities!

CHIP Reauthorization Deadline Quickly Approaching

With only half of September left, the deadline for Congress to reauthorize CHIP, the Children's Health Insurance Program, is quickly approaching. On Tuesday, the [Senate Finance Committee](#) announced an agreement to extend CHIP for five years. Full

We want to hear your thoughts about our website.

- Is it easy to navigate?
- Did you find what you were looking for?
- What would you like to see on our website?
- If there is something you really like about our website, please tell us!

Send us your thoughts! We will not share your ideas or thoughts with anyone.

Email us:
info@oralhealthkansas.org



Sugary Drink Display

"Wow, I didn't know that's how much sugar was in my drink!" A quote we often hear from people who reserve our sugary drink display. People use our drink display at schools, for classroom education, health fairs and at the office! Sign up before the months fill up!

Our sugary drink display has 10 popular beverages and shows how much sugar is in each. We also include some of our [Tips and Tricks](#) fact sheets and brush your teeth mirror clings! The display is free to use for up to a month, and we reimburse postage!

legislative language is said to be released in the coming days. Although this deal is good news, there is still a lot of work left to get a bill passed through the Senate and House by September 30 when CHIP funding will expire. Congress has a lot of competing deadlines and needs to be reminded of the urgency for reauthorization of CHIP!

What Can You Do?

Contact your congress members via phone, email, letter, etc. [Here](#) are the letters we sent our Congressional Delegation earlier this week.

Encourage your organization and partners to sign-on to this [letter](#) from the Alliance for a Healthy Kansas in support of CHIP Reauthorization.

Join our **CHIP Twitter Storm** on Tuesday, September 19th from 1-2 CST. Additional resources, such as sample tweets and graphics, will be sent out via email. Save the date now!

Talking Points

Children enrolled in CHIP are more likely to graduate high school, be healthier as adults, earn higher wages, and pay more taxes.

There are currently 40,000 Kansas children who are counting on CHIP for their health and dental coverage.

Kansas has already accounted for CHIP funding in the 2018 budget. If CHIP is not reauthorized by September 30th, 40,000 children in Kansas will be left without health or dental coverage.

Reserving yours ahead of time ensures you can get the date(s) you need. [Email us](#) and let us know when you would like to reserve a drink display.



ORAL HEALTH KANSAS

800 SW Jackson, Suite 1120
Topeka, Kansas 66612
785-235-6039

info@oralhealthkansas.org

[Donate Now](#)

[Like us on Facebook](#)

[Follow us on twitter](#)

[FOLLOW US ON Pinterest](#)

Kansas Community Health Worker Coalition

Oral Health Kansas participated in the 3rd collective of the Kansas Community Health Worker (CHW) Coalition on Thursday, September 7, 2017 at the Rolling Hills Zoo in Salina. Other participants included academicians, CHWs, advocacy groups, philanthropy organizations, KanCare managed care organizations, local health departments, Kansas Department of Health and Environment, and many others.

The agenda covered a wide range of topics including coalition structure and future regional CHW forums that will provide a place for CHWs to share resources, celebrate successes, and solicit feedback and assistance from other CHWs. If you are interested in learning more about Community Health Workers, joining the coalition distribution list, or being involved in one of the coalition committees (Advocacy, Education, and/or Symposium), please contact Alissa Rankin at Alissa.rankin@washburn.edu.

Oral Health Kansas looks forward to exploring ways we can offer assistance

View our videos on  YouTube

 View on Instagram

to this emerging workforce and the great supportive health services they are providing across Kansas.



Oral Health Kansas, 800 SW Jackson, Ste. 1120, Topeka, KS 66612
info@oralhealthkansas.org