

ORAL HEALTH KANSAS

ADVOCACY • PUBLIC AWARENESS • EDUCATION

Volume 8, Issue 47

November 22, 2017

In This Issue

[Last week, OHK exhibited at a Health and Wellness Fair](#)
[Sugary Drink Display](#)
[Thankful for our work](#)
[OHK publishes Kansas Oral Health Snapshot](#)



Last week, OHK exhibited at a Health and Wellness Fair, hosted by the Gil Carter Initiative, Inc. Topeka's WIBW's Eric Ives, spoke with Christi and Sonia about the sugary drink display. You can view the Facebook Live video [here](#). WIBW also gave an overview of the event on the news that afternoon. Click [here](#) to see more of OHK at the event.

Sugary Drink Display

Holiday meals with families can

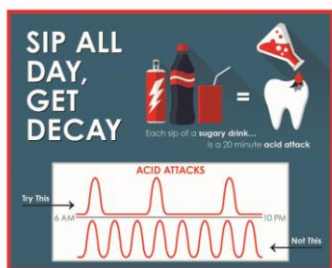
A Time to be Thankful

This Thanksgiving we are reminded of the many things we are thankful for. We are thankful for our partners, advocates and consumers who are willing to share their oral health story with us. This is also a time to think about Kansas families who are not as fortunate as we are. Each year at least 18,900 Kansans visit emergency rooms with dental pain, and the vast majority of these visits are preventable.

At OHK, we continue to provide education and resources to the public so Kansans know all mouths matter. With your help we are able to continue to advocate for a #cavityfreeks. As the holiday season begins, please consider a donation to keep the mission of Oral Health Kansas alive. Here are some examples of the impact your contributions can have:

- \$25 will ship the sugary drink display to one health department
- \$50 will publish one issue of the Weekly Wednesday Update

sometimes be a difficult time to watch what you drink. If you choose to drink a sugary beverage, remember to drink it in one sitting and not sip all day. Also, drink water as a way to rinse your mouth.



Our sugary drink display is a perfect example to share with your family why it's important to watch what you drink! The sugary drink display has 10 popular beverages and shows how much sugar is in each. We also include some of our [Tips and Tricks](#) fact sheets and brush your teeth mirror clings! The display is free to use for up to a month, and we reimburse postage!

Send your reservation request ahead of time to ensure you will have one on hold! [Email us!](#)



ORAL HEALTH KANSAS

800 SW Jackson, Suite 1120
Topeka, Kansas 66612
785-235-6039

info@oralhealthkansas.org

[Donate Now](#)

- \$100 will educate stakeholders in one community about water fluoridation
- \$250 will send a staff member to four meetings with a local oral health coalition
- \$500 will support two health educators to attend a "Teeth for Tots" workshop
- \$1000 will provide an "All Aboard the Cavity-Free Express" event for 15 families


[Donate Today!](#)

2017 Kansas Oral Health Snapshot Released

The Kansas Oral Health Snapshot features data about the economic and educational status of county residents, as well as information about the oral health challenges and resources for each of Kansas' 105 counties.

Kansas Oral Health Connections sponsored this county-level oral health data book. The partners in Kansas Oral Health Connections are Oral Health Kansas, KDHE Bureau of Health Promotion, Kansas Head Start Association, Kansas Association for the Medically Underserved, Kansas Dental Association, and Kansas Chapter American Academy of Pediatrics. Kansas Oral Health Connections and this Snapshot are supported by the DentaQuest Foundation.


You can click on a county to [view the data](#) or read the complete book [here](#).

 Like us on Facebook

Follow us on  twitter

FOLLOW US ON  Pinterest

View our videos on  YouTube

 View on Instagram

COUNTY FACTS

Region of the State	Northeast
Population	178,725
2016 Kansas County Health Rank	65
Median Household Income	51,300
High School Graduation Rate	80
Percentage of Residents with Some College	65
Unemployment Rate	4.3
Percentage of Children Living in Poverty	20
Percentage on Free & Reduced School Lunch	54.93
Children under 18 Enrolled in Medicaid	20,403
Adults over 18 Enrolled in Medicaid	12,905
Uninsured Residents	12
Ethnicity percentages: Non Hispanic African Americans - 8.1 American Indian and Alaskan Native - 1.4 Asian - 1.4 Hispanic - 11.6 Non-Hispanic White - 74.8 Pacific Islander/Other - 0.1	

ORAL HEALTH FACTS

Dentists	87
Medicaid Dentists	*
Specialty Dentists	Endodontist - 3, Orthodontist - 9, Oral Surgeon - 3, Pedodontist - 4, Periodontist - 1
Registered Dental Hygienists	110
Extended Care Permit Dental Hygienists	ECP I - 1 ECP II - 5 ECP III - 2
Safety Net Clinic(s)	Yes, see page 16
Navigators	Yes, see page 12
Children (School Aged) with Sealants	41.04
Children with Treated Decay	29.84
Children with Untreated Decay	9.69

* Current, unduplicated data is not available from state sources

Shawnee County data

Holiday hours

In celebration of the Thanksgiving holiday, the OHK office will be closed November 22-24. We will be back November 27.

Oral Health Kansas, 800 SW Jackson, Ste. 1120, Topeka, KS 66612
info@oralhealthkansas.org